

## Single Leaf T30 (EI<sub>2</sub> 30-SaC5) Fire Retardant Steel Door

**Fire Protection** T30 (EI<sub>2</sub> 30-SaC5) tested acc. to EN 1634-1

### Optional Audited Additional Functions

- Smoke Control	RS	tested acc. to DIN 1634-3
- Sound Insulation	up to 42 dB	tested acc. to EN ISO 10140-2
- Burglar Protection	RC1/RC2/RC3/RC4	tested acc. to EN 1627
- Fan Light, Top Panel, Side Panels		
- Stainless Steel		

### Range of Dimension

**Range of Dimension for Doors** Width from 625 mm to 1500 mm  
Height from 1750 mm to 3250 mm  
(with fan light or top panel up to height of max. 3500 mm)  
(with side panels up to element width of max. 3500 mm)

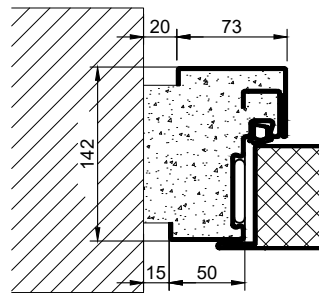
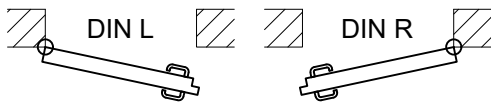
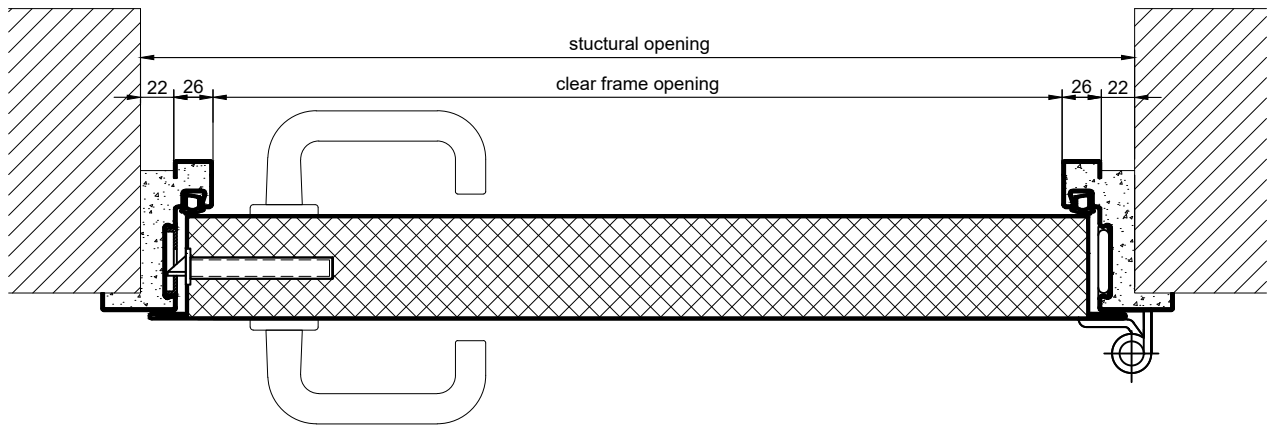
**Range of Dimension for Hatches** Width from 500 mm to 1350 mm  
Height from 500 mm to 1875 mm

### Technical Specification and Tender Text

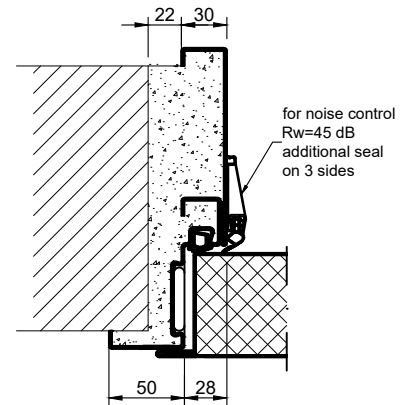
<b>Product:</b>	T30-1 (EI <sub>2</sub> 30-SaC5) single leaf fire retardant steel door brand Buchele tested acc. to EN 1634-1	
<b>Door Type:</b>	TSN-1 (system Schroeders)	
<b>Structural Opening:</b>	.... x .... mm	
<b>Door Leaf:</b>	69 mm thick, three sides rebated, thin- or thick rebate securing pin	
<b>Threshold:</b>	Separation sill, surface galvanized	
<b>Frame:</b>	3-sided corner frame with sealing profile in rebate	
<b>Hinges:</b>	Three-part construction hinges with ball bearing spacer ring	
<b>Door Closer:</b>	Door closer system with standard arm	
<b>Fitting:</b>	Mortise lock with latch lever function (prepared for installation of a profile cylinder lock, provided by customer). Door handle set fixed pivoted synthetic material black in U-shape with rounded short-plate.	
<b>Surface:</b>	Door leaf and frame galvanized und primed with primer similar RAL 7035.	
<b>Assembly:</b>	Delivery and professional assembly including filling of the frame with mortar of group III.	
<b>Installation:</b>	masonry	≥ 115 mm
	concrete	≥ 100 mm
	areated concrete	≥ 150 mm
	mounting wall F90	≥ 100 mm

### Supplementary Equipment

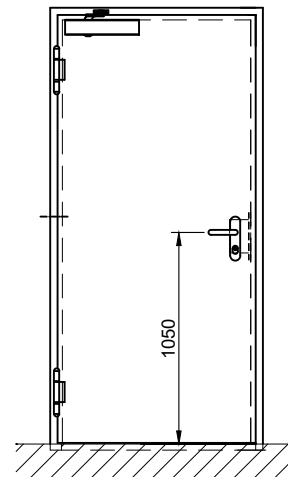
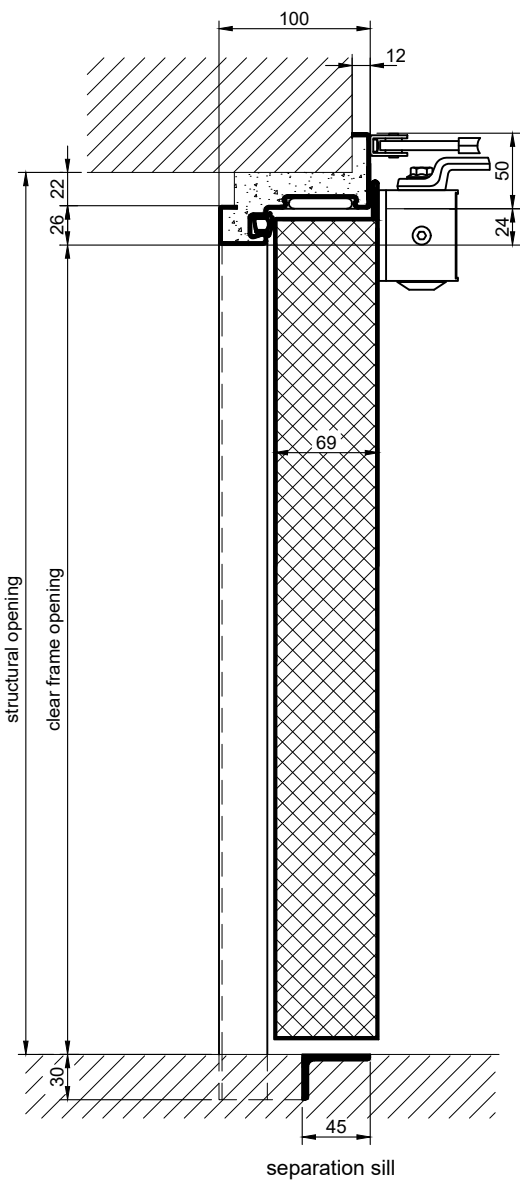
- Glazing:** F30 fire-protective glazing fixed with steel glazing bars.  
Minimum border 90 mm circumferential,  
max. size of glass 940 x 2195 mm.
- Stainless Steel:** Material 1.4301 (V2A) or. 1.4404 (V4A),  
Surface mill finish or brushed.



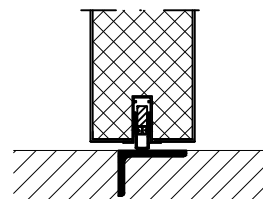
block frame



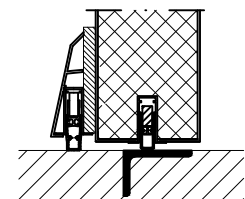
encasing frame



threshold variants (more on request):



drop seal  
sound insulation Rw = 35 dB



sound insulation Rw = 43 dB